

# Safe-Away® Product Catalogue



*For a safer way to access and egress from  
earthmoving and mining equipment*

# Table of Contents

<b>Introduction</b>	3
<b>Electric Access Systems</b>	
Electric Access System Features	4
Model EL-CF	5
Model EL-V	5
Model EL-RTV	5
Model EL-DMV	5
Model EL-24H	5
Model EL-FX	6
<b>Manual Ladder</b>	
Model ML2	7
<b>Emergency Ladders</b>	
Model EE (Emergency Escape)	8
Model EF (Emergency Folding)	9
<b>Safe-Away® 2009 Series Power Pack for Electric/Hydraulic Access Systems</b>	
Safe-Away® 2009 Series Power Pack	10
Incab Control - Data Logging	11
<b>Electric/Hydraulic Access Systems</b>	
RTV-DK Series (RTV-SDK & RTV-LDK)	12
RTV Stairs (RTV-CF & RTV-B)	14
RT-45	16
VHS	17
RotorStep Ladders (MODEL G, GM, GK, L & S)	18
24H	20
SWING	21
<b>Optional Extras</b>	22

# Hedweld Group of Companies

Hedweld Group of Companies consists of Hedweld Engineering Pty Ltd, Hedweld USA Inc., Milbrotec Pty Ltd and Mecensol Pty Ltd. Hedweld has established itself as a world leader in the design and manufacture of mining equipment.

Hedweld is known for its Trilift® range of workshop component handling equipment and the Safe-Away® range of Ladder and Stair Access Systems. Hedweld markets and distributes a range of technologically advanced, innovative products designed for the mining and earthmoving industries. Both product ranges offer high quality products specifically designed to improve safety and efficiency within these industries.

## Safe-Away® Product Range

Safe-Away® Ladder and Stair Access Systems provide innovative and technologically advanced access options specifically designed for the mining and earthmoving industries. These high quality products are designed to improve safety and efficiency within these industries. As well as supporting the Australian mining industry, Hedweld products are exported globally to regions including Africa, North and South America, Central Asia and the Asia Pacific.

The Safe-Away® designed and manufactured range of access systems offer improved safety for maintenance and operational personnel accessing and egressing from mining and heavy earthmoving vehicles. Access solutions are available for most makes and models of trucks, dozers, loaders, graders, scrapers, shovels, excavators and drill rigs.

To keep pace with the ever changing developments in heavy machinery design, Safe-Away® works closely with Original Equipment Manufacturers (OEMs) to custom design new and innovative products to make vehicle access safer and more time efficient. Safe-Away® has gained recognition as a supplier of reliable access equipment to OEMs globally.

Safety	Efficiency	Innovation
Hedweld's Safe-Away® range of Access Systems improve safety by reducing the hazards associated with accessing and egressing mining and earthmoving equipment.	By replacing traditional boarding methods with Safe-Away® Access Systems, personnel can access equipment easier while carrying objects, therefore reducing downtime.	Using the latest design techniques and technology we pride ourselves on being at the forefront of innovation.

*Through innovation we provide  
improved safety and efficiency*



## Electric Access Systems

## Electric Access Systems

The **Safe-Away® Electric Access Systems** have been designed to suit various makes and models of mining and earthmoving equipment.

The **Safe-Away® Electric Access Systems** provide:

- A 62° ladder offering safer access and egress while carrying objects (excluding the EL-FX).
- Each model raises safely out of the way while the vehicle is in motion.
- Handrails to give three points of contact.
- Easy installation.
- Low maintenance.
- No hydraulics.
- Compact designs.
- Safe and user friendly.
- Cost effective.



### Access System Features



- **Boarding Light and Wiring Harness Kit.**  
The LED boarding light will stay on for an adjustable/preset period.

- Incab **touch screen** controlling the up and down ladder functions with a battery charge display.
- The **DVC710** is the master control for the electric ladder input/out and is located with the **Electrical Control Module (ECM).**



- The DVC710 is encapsulated in the ECM **stainless steel box** to withstand harsh operating environments.
- A **park brake interlock** provides additional protection by ensuring the ladder is raised automatically when the park brake is released. (Note: not applicable with Momentary operation configuration).
- **Batteries** power the ladders. The host equipment's main power recharges these batteries when host is in use.

### ECM Functions

- The **state of charge** is regulated by the DVC710.
- The **operational voltage** is 24VDC.
- The DVC710 has its own Controller Area Network (CAN) which is used by the Incab Controller.
- The system is **compatible with all CAN-BUS** and J1939 components.
- Reverse polarity protection.
- Status LED indicator.



## Electric Access Systems

### Designed to suit your fleet

The **Safe-Away® Electric Access Systems** are designed to suit OEM vehicles and are able to be retrofitted if replacing existing systems. The Electric Access Systems may be varied to accommodate your requirements for specific mount points, platform handrails, infills and site and/or OEM colours.

The Electric Access Systems are designed for use on:

- Haul Trucks (up to 100 T payload)
- Civil Works Plant and Equipment
- Earthmoving Plant and Equipment
- Quarrying Plant and Equipment
- Mining Plant and Equipment

### Optional extras

- Momentary operation
- Additional Raise and Lower Control Panel Kit
- Emergency Stop
- External Audible Alarm
- Inhibit Kit

See page 22 for more details on extras.



**EL-V**

The Electric Ladder - Vertical is designed for use on:

773B	773D	773E
773F	775B	775D
775E	775F	777B
777C	777D	L1100
L1350	L1850	
ROC D65		

Can be adapted for other equipment.



**EL-CF**

The Electric Ladder - Centre Folding is designed for use on:

988F	988G	988H
WA600	WD600	WD900

Can be adapted for other equipment.



**EL-RTV**

The Electric Ladder - Raise To Vertical is designed for use on:

HD605	HD455
HD785	HD985

Can be adapted for other equipment.



**EL-DMV**

The Electric Ladder - Deck Mounted Vertical is designed for use on:

773B	773D	773E
773F	773G	775B
773D	773E	773F
775G		

Can be adapted for other equipment.



**EL-24H**

The Electric Ladder - 24H is designed for use on:

24H graders



## Electric Ladder

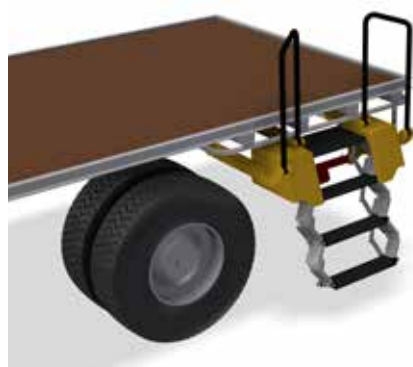
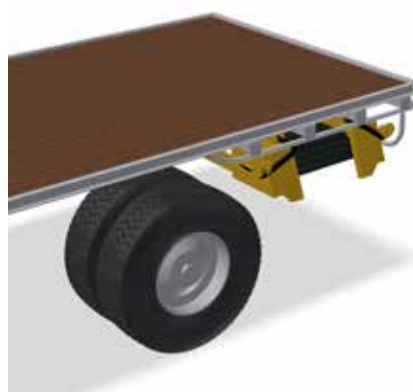
# EL-FX Electric Ladder

The Safe-Away® EL-FX Electric Ladder has been designed to suit various makes and models of light commercial vehicles, flat bed trucks, articulated mining and earthmoving equipment.

The EL-FX Electric Ladder retracts to a safe stowed position when the equipment is in motion. The compact design and mounting arrangement makes the EL-FX suitable for a wide variety of vehicles with trays, and machines that articulate towards the access point. Easy to install and utilises a simple on board control system.

Designed for use on:

- Articulated Loaders
- Articulated Trucks
- On-highway Trucks/ Trailers (flat bed)



## Ladder Features



- **Boarding Light and Wiring Harness Kit.** The LED boarding light will stay on for an adjustable/preset period.

- Incab **touch screen** controlling the up and down ladder functions with a battery charge display.
- The **DVC710** is the master control for the electric ladder input/out and is located with the **Electrical Control Module (ECM)**.
- The DVC710 is encapsulated in the ECM **stainless steel box** to withstand harsh operating environments.
- A **park brake interlock** provides additional protection by ensuring the ladder is raised automatically when the park brake is released. (Note: not applicable with Momentary operation configuration).
- **Battery powered.** The host equipment's main power recharges these batteries when host is in use.



## Manual Ladder

### Model ML2

The Safe-Away® ML2 ladder is a manually operated ladder that has been designed as a secondary access option to improve safety for operators and maintenance personnel working with drill rigs or other equipment only requiring simple, manually operated access.

The ML2 ladder can be easily raised or lowered by one person from the deck area or from the ground. When not in use the ladder is retracted to a vertical position above the ground to reduce the possibility of physical damage.

A spring-loaded locking mechanism is provided to hold the ladder in the raised position, ensuring that the ladder will not accidentally lower while your equipment is in operation.

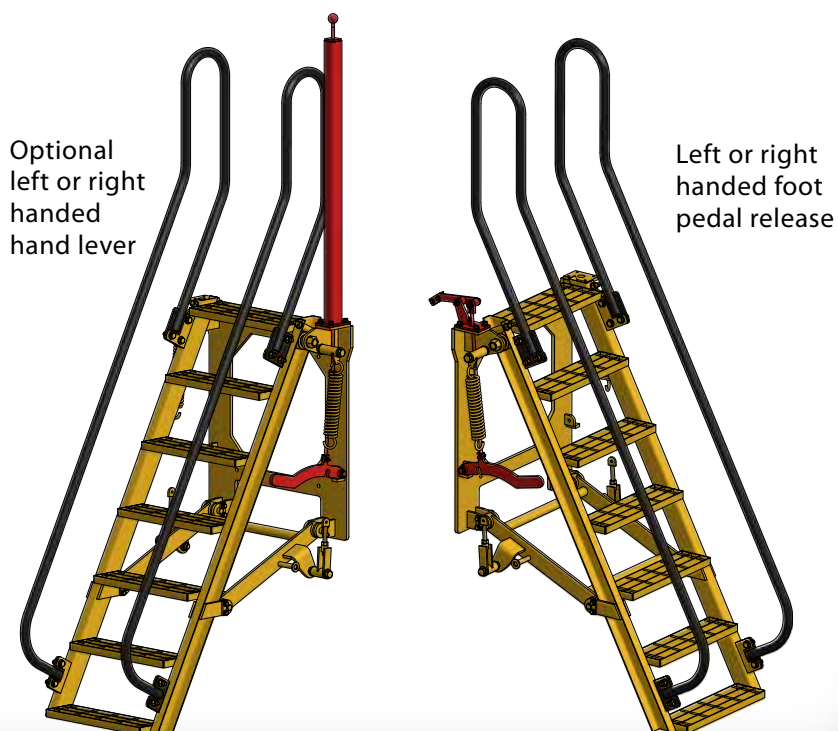
#### Designed for use on

- Drill Rigs
- Small Earthmoving Equipment
- Equipment up to 1760mm deck height

#### Ladder Features

- Manual operation.
- Comes pre-assembled and ready to fit.
- Easily operated from the ground or deck.
- Retracts to vertical position for storage.
- Low maintenance - no electrics or hydraulics.
- Suitable for emergency egress.

**Please note** this product does not require a Power Pack.





## Emergency Ladder

### Model EE (Emergency Escape)

The Safe-Away® Model Emergency Escape Ladder (EE) is designed as a complete module to be installed on existing walkways or platforms. It serves as part of the handrail section until the ladder is required.

The linked ladder sections concertina together to form a compact block inside the mount. In an emergency, the gate type mount cover is opened and the ladder is pushed out. As the ladder falls it expands to the open position, ready for descent to the ground.

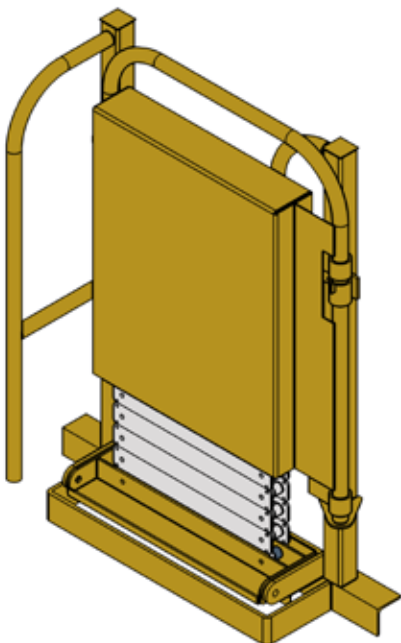
#### Designed for use on

- Trucks
- Excavators
- Shovels
- Loaders
- Wheel Dozers

#### Ladder Features

- Simple to use in an emergency.
- Available in various lengths from 2400mm to 6600mm.
- Comes pre-assembled and ready to fit.

**Please note** this product does not require a Power Pack.



Step 1  
Release lock



Step 2  
Open gate



Step 3  
Push ladder out



Step 4  
Descend



## Emergency Ladder

### Model EF (Emergency Folding)

The Safe-Away® Model Emergency Folding Ladder (EF) is designed for quick evacuation from an excavator cab to the ground in the event of an emergency.

A foot-operated latch releases the pivoting section of the ladder. This ladder section will hinge over to the lowered position. The descent of the ladder is controlled by an accumulator and hydraulic cylinder.

#### Designed for use on

- Excavators
- Loaders

#### Ladder Features

- Simple to use in an emergency.
- Available in various lengths from 3000mm to 6600mm.
- Comes pre-assembled and ready to fit.
- Designed to come into contact with the ground.

**Please note** this product does not require a Power Pack.



Model EF Ladder shown fitted to excavator in the up and down positions



## Safe-Away® Power Pack Series 2009

# 2009 Series Power Pack

The **Safe-Away® 2009 Series Power Pack** is driven by the Access Control System and is available in Momentary operation configuration. The hydraulic Power Pack may be mounted vertically, or horizontally at a convenient location of your choosing, on the equipment.

The **Safe-Away® 2009 Series Access Control System** manages all hydraulic ladder and stair operations.

It provides:

- Activity logs downloadable to a USB.
- Sequential reports on all events with time and date stamps:
  - Raising and lowering,
  - Fault indications.
- Diagnostics and error reporting accessed directly from the incab control digital display.

### Designed for use on

- All Safe-Away® electric/hydraulic operated Access Systems

### Incab Control System Features

- Incab control panel with a digital touch pad display showing:
  - Access system status; UP, DOWN and IN MOTION.
  - Detailed fault indication with audible alarm and system event log.
  - 3,000 point event data log with download using a USB key.
- View downloaded log files as summary and/or full log data in Microsoft® Excel using the supplied SLA to XLS file converter.

### Not required for:

- Electric ladders
- Manual ladders
- Emergency escape or folding ladders





## Safe-Away® Power Pack Series 2009

# Incab Control - Data Logging

The Incab Control includes an activity data logging capability which allows the simple download of logged data pertaining to the day to day operations of the access system. All events including raising and lowering of the ladder or stair and fault indications are time and date stamped to provide a sequential record of all access system operations.

The diagnostics and data logging capability is a standard feature with all Safe-Away® 2009 Series Access Systems. The Microsoft® Excel interface file is loaded on the USB key that is supplied with every access system. This file is required to generate reports and view the downloaded data log from the in cab controller. From this Microsoft® Excel interface file, users are able to view up to the last 3,000 events.

### Easy 3 step process:

1. Download data log from incab control
2. Load to Microsoft® Excel interface file
3. View & diagnose log data



	A	B	C	D
2	Log Index	Event Label	Event Code	Date
3	1	Ladder Down	254	01/09/2000 11:31:47 PM
4	2	System Voltage Below 18V	18	02/09/2000 12:15:21 AM
5	3	Ladder Up	255	02/09/2000 12:20:20 AM
6	4	Ladder Down	254	02/09/2000 01:38:05 AM
7	5	Ladder Up	255	02/09/2000 01:40:34 AM
8	6	Ladder Down	254	02/09/2000 04:38:29 AM
9	7	Ladder Up	255	02/09/2000 05:21:04 AM
10	8	Ladder Down	254	02/09/2000 06:37:10 AM
11	9	System Voltage Below 18V	18	02/09/2000 06:42:51 AM
12	10	Ladder Up	255	02/09/2000 07:19:39 AM
13	11	System Voltage < 18V During Movement	17	02/09/2000 07:19:46 AM
14	12	Ladder Down	254	02/09/2000 08:00:52 AM
15	13	System Voltage Below 18V	18	02/09/2000 08:01:40 AM
16	14	Ladder Up	255	02/09/2000 08:08:12 AM
17	15	Ladder Down	254	02/09/2000 08:22:30 AM
18	16	System Voltage Below 18V	18	02/09/2000 08:24:54 AM
19	17	System Voltage Below 18V	18	02/09/2000 12:24:06 PM



Electric/Hydraulic

## RTV DK Series

The Safe-Away® DK Series Access Systems have been designed to improve safety for operator and maintenance staff when accessing large earthmoving equipment employed in the mining industry.

The RTV-SDKs and RTV-LDKs are powered by the Safe-Away® 2009 Series Power Pack.

To reduce the possibility of physical damage, the RTV-SDK Stair is retracted to a vertical position above the ground when the machine is operational. The 45° stair offers easier access for maintenance and operational personnel when accessing the vehicle while carrying objects.

The RTV-LDK 62° Ladders are electro-hydraulically controlled and rotate through an arc to the upright, 'parked' position to protect the ladders from physical damage when the equipment is in use. Included in both models is a Park Brake Interlock Kit providing additional protection by ensuring the access systems are raised automatically when the park brake is released (Note: not applicable with Momentary operation configuration).

### Optional extras

- Additional Raise & Lower Control Panel Kit
- Hydraulic Emergency Down Kit
- Boarding Light
- Audible Alarm
- Inhibit Kit
- Reservoir Heater

See page 22 for more details on extras.

### Access System Features

The RTV DK Series Access Systems are driven by a double ended actuator driving both stringers with even power.

The RTV-SDK and RTV-LDK models offer:

- lower costs,
- 10% fewer moving parts,
- a tread mesh top step for greater safety,
- simpler and more cost effective replacement as the actuator housing is separate to the infill box,
- easier installation, training and maintenance,
- less spare parts to be used or stocked.



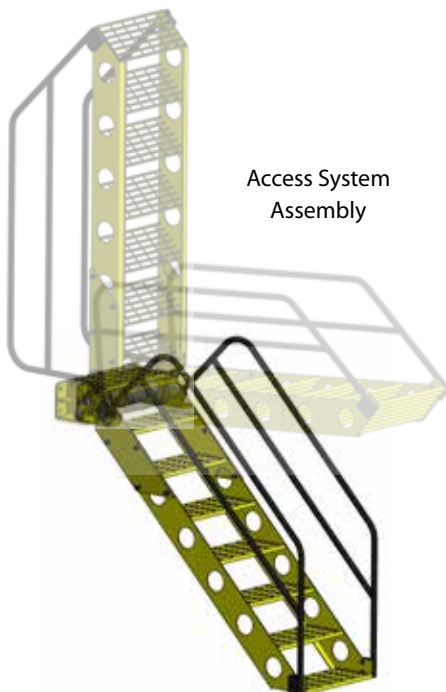
## Electric/Hydraulic

### RTV-SDK

Mount infill box  
enclosing the horizontal  
Hydraulic Power Pack



Access System  
Assembly

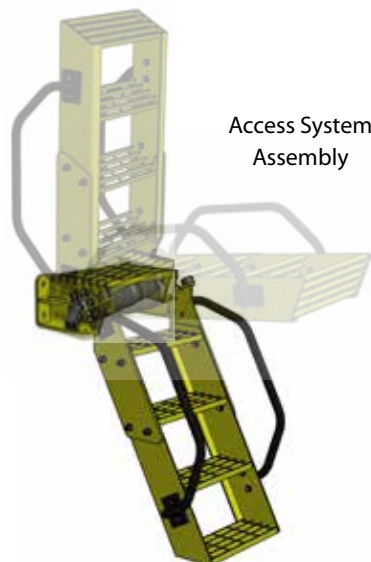


### RTV-LDK

Mount infill box  
enclosing the horizontal  
Hydraulic Power Pack



Access System  
Assembly



### RTV-SDK

Designed for use on:

- Trucks
- Dozers
- Loaders
- Shovels
- Excavators

Compatible OEM models include:

773F	773G	775F	777F	777G
785C	785D	789C-D	793B-F	793F
797F	988F-H	992C-D	992K	992C-G
993K	994G	844B-H	854B-K	730E
830E	930E	960E	WA600	WA900
WA1200	EH4500	EH5500	L1850	T262
T282				

Can also be adapted for other equipment.

### RTV-LDK

Designed for use on:

- Truck
- Dozers
- Loaders
- Shovels
- Excavators
- Graders

Compatible OEM models include:

773E	773F	775A-E	775F	777D
777F	777G	789A-C	789D	793B-F
797F	980H	988G	988H	992C-G
992K	993K	994D-F	994H	824H
834B-H	844H	854B-K	24M	385
HD1500	WA800	WA900	WD900	PC1000
PC1250	PC1600	EH4500	EH5500	EX1900
EX1200-5	MT4400			

Can also be adapted for other equipment.



Electric/Hydraulic Stair

## RTV Stairs

The Safe-Away® Raise To Vertical (RTV) Stairs have been designed to improve safety for operator and maintenance staff when accessing large earthmoving equipment employed in the mining industry.

To reduce the possibility of physical damage to the stairs, the RTVs are retracted to a vertical position above the ground when the machine is operational. The 45° stair offers easier access for maintenance and operational personnel when accessing the vehicle while carrying objects.

The RTVs include a Park Brake Interlock Kit providing additional protection by ensuring the stair is raised automatically when the park brake is released (Note: not applicable with Momentary operation configuration).

### Optional extras

- Additional Raise and Lower Control Panel Kit
- Hydraulic Emergency Down Kit
- Boarding Light
- Audible Alarm
- Inhibit Kit
- Reservoir Heater

See page 22 for more details on extras.





## Electric/Hydraulic Stair

### RTV-CF

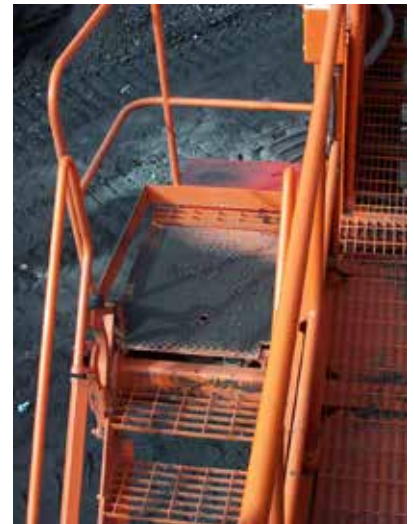
Designed for use on:

- Shovels
- Loaders
- Excavators
- Equipment up to 4900mm deck height

Compatible OEM models include:

PC3000	PC4000	PC5500	PC8000
H285	EX1900	EX2500	EX3500
EX3600	EX5500	L1850	L2350
994	996	RH120	RH170
RH200	RH340	RH400	B295

Can be adapted for other equipment.



### RTV-B

Designed for use on:

- Trucks
- Loaders
- Excavators
- Equipment up to 3000mm deck height

Compatible OEM models include:

994	WA1200
-----	--------

Can be adapted for other equipment.





## Electric/Hydraulic Stair

### RT-45

The Safe-Away® Raise To 45° retractable stair consists of a pivoting bottom stair section which raises to an angle of 45° when the machine is operational. There are equipment specific designs to accommodate an upper landing and/or cabin access platform.

When fitted to a truck or water cart, the hydraulically controlled pivot stair section retracts above the bumper to reduce the possibility of physical damage.

The RT-45 includes a Park Brake Interlock Kit providing additional protection by ensuring the stair is raised automatically when the park brake is released (Note: not applicable with Momentary operation configuration).

The Safe-Away® RT-45 Stair is pictured on a Cat 785C truck (above) and on a Cat 777D water cart (below).



#### RT-45 for use on trucks & water carts

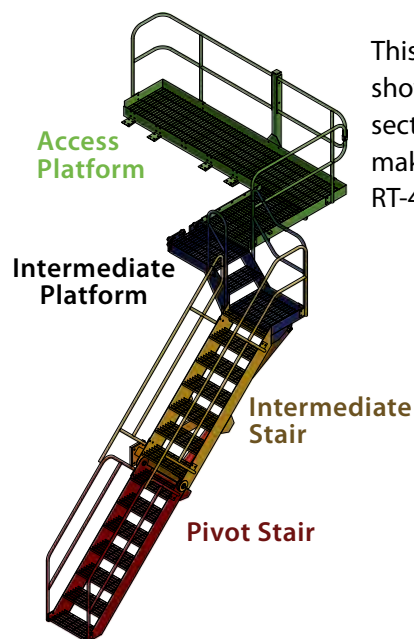
Compatible OEM models include:

773B	773D	773E	775B	775D
775E	777B	777C	777D	785B
785C	785D	789B	789C	789D
HD465	HD785	HD985	140M	170E
630E	730E	MT3300	MT3600	MT4000
MT4400				

#### Optional extras

- Additional Raise & Lower Control Panel Kit
- Hydraulic Emergency Down Kit
- Boarding Light
- Audible Alarm
- Inhibit Kit
- Reservoir Heater

See page 22 for more details on extras.



This drawing shows the sections that makes up the RT-45.



## Electric/Hydraulic Stair

### VHS

The Safe-Away® Variable Height Stair (VHS) has been designed to improve safety and access for operational and maintenance personnel working on drill rigs. Due to the height variations in drill rig positioning, the stair treads automatically compensate for stair angles between 29° & 45°.

The Safe-Away® VHS has been specifically designed to suit a wide range of drill rigs. The VHS Includes:

- Complete stair assembly, handrails, mounting bracket and installation kit.
- The fixed handrail system provides for three points of contact.
- Electric/hydraulic movements are controlled via the 24 volt Safe-Away Series 2009 VHS Power Pack.
- When the drill rig is operational or mobile the VHS is safely retracted to the horizontal position.
- A Maintenance Prop is provided for use on the Cylinder Rod, to enable work to occur under the stair with safety. The Maintenance Prop prevents the Hydraulic Cylinder from retracting, holding the stair in the raised position.
- Park Brake Interlock Kit provides additional protection by raising the stair automatically when the park brake is released (Note: not applicable with Momentary operation configuration).
- Hydraulic emergency down valve to manually release the stair lowering it to the down position.
- Available with Momentary operation controller.

The Safe-Away® 2009 Series VHS Power Pack comes in a stainless steel cabinet that houses the main hydraulic and electrical control components. The VHS Power Pack includes:

- Harnesses and leads.
- Battery Circuit Breaker Kit.



### VHS Compatibility

DMM2	DMM3	DM25	DML	DML 60
D40KS	D45KS	D55SP	DR460	D60KS
D75KS	D90KS	D90K	1190E	
Pit Viper 235		Pit Viper 271		122XR
Pit Viper 275		Pit Viper 351		77XR



Model VHS shown fitted to a Drill Rig

### Optional extras

- Additional Raise and Lower Control Panel Kit
- Boarding Light
- Audible Alarm
- Inhibit Kit

See page 22 for more details on extras.



## Electric/Hydraulic Ladders

# RotorStep Ladders

The Safe-Away® RotorSteps have been designed to provide a low maintenance, ergonomic and safe access for the operators and maintenance personnel of graders, scrapers or excavators in the mining and heavy earthmoving industries.

The RotorStep Ladders are electro-hydraulically controlled and rotate through an arc of 180° to the vertical 'parked' position to protect the ladders from physical damage when the equipment is in operation. The RotorStep Ladders include a Park Brake Interlock Kit providing additional protection by ensuring the ladder is raised automatically when the park brake is released (Note: not applicable with Momentary operation configuration).



RotorStep G Ladder shown fitted to a  
Cat 16G Grader



RotorStep GM Ladder shown fitted to a  
Cat 16M Grader



RotorStep S Ladder shown fitted to a  
Cat 657 scraper

## Optional extras

- Additional Raise and Lower Control Panel Kit
- Boarding Light
- Audible Alarm
- Inhibit Kit
- Reservoir Heater

See page 22 for more details on extras.



## Electric/Hydraulic Ladders

### RotorSteps

Model	Compatible with:	Features & Benefits
<b>RotorStep M3</b>	Cat 18M3 Graders Cat 16M3 Graders	Top landing on M3 Models. Safer direct access to cabin.
<b>RotorStep G</b>	Cat 16G Graders Cat 16H Graders	The compact mount ensures visibility to the point of the blade. Will not obstruct an operators vision when in the raised position.
<b>RotorStep GM</b>	Cat 16M Graders	
<b>RotorStep GK</b>	Komatsu GD825 Graders	
<b>RotorStep L</b>	Excavators and Trucks 320C      320D 320E      385B 385C      PC300 PC1000   ZX350 934      974	Unique design keeps the ladder off the tracks. Compact mount plates to ensure visibility. Operates with the cab door fully open or close. Will not obstruct an operators vision when in the raised position.
<b>RotorStep S</b>	Cat Scrapers 631D      631E 631G      637D 637E      637G 651B      651E 657B      657E 657G	A rotating platform section provides a walkway between the cab and the ladder. It sits in an upright position when the scraper is operational. A robust mount minimises damage to ladder when positioned on the scraper front corners. Operates with the cab door fully open or closed. Will not obstruct an operators vision when in the raised position.



RotorStep L in the retracted position



RotorStep L in motion



RotorStep L in the extended position



## Electric/Hydraulic Ladder

# 24H Ladder

The Safe-Away® Cat 24H Grader Access System has been specifically designed to provide safe and convenient access for operators and maintenance personnel accessing the 24H grader.

Hydraulically operated, the 24H Ladder folds neatly within the frame when the grader is in operation. Incorporated into the ladder design is a special mounting frame for fitting directly to the 24H. The 24H Ladder includes Park Brake Interlock Kit providing additional protection by ensuring the ladder is raised automatically when the park brake is released (Note: not applicable with Momentary operation configuration).

### Designed for use on:

- Cat 24H Graders

### Optional extras

- Additional Raise and Lower Control Panel Kit
- Hydraulic Emergency Down Kit
- Boarding Light
- Audible Alarm
- Inhibit Kit
- Reservoir Heater

See page 22 for more details on extras.



Cat 24H Access System shown lowered and retracted



## Electric/Hydraulic Ladder

# SWING Ladder

The Safe-Away® SWING Access Ladder has been designed for heavy mining and excavation machinery to provide a low maintenance access system that will comply with step type ladder standards for 62° access and egress.

The ladder is electro-hydraulically controlled to provide an automatic three step process: swing up, retract in & lower to cradle. The ladder is protected from mechanical damage when raised to the fully retracted position when the vehicle is operational. The Swing Ladder includes:

- An LED boarding light that will stay on for an adjustable/preset period.
- Park Brake Interlock Kit providing additional protection by ensuring the ladder is raised automatically when the park brake is released (Note: not applicable with Momentary operation configuration).



### Designed for use on:

- Dozers
- Shovels
- Excavators

Compatible OEM models include:

D9R	D9N	D9T	D10N
D10R	D10T	D11N	D11R
D11T	5130B	5230B	D275
D375	D475	PC1800	RH120

Can be adapted for other equipment.

### Optional extras

- Additional Raise and Lower Control Panel Kit
- External Audible Alarm
- Inhibit Kit
- Reservoir Heater

See page 22 for more details on extras.



## Optional Extras

# Optional extras



### Additional Raise and Lower Control Kit

Designed to enable the access system to raise and lower. This remotely mounted control is contained in a cast aluminium alloy box to provide protection against the elements and other damage.

It can be located outside the cabin, at the mid-platform or at ground level and operated with a simple toggle switch.

The Raise and Lower Control Kit can be supplied with a extension harness ranging from 1m-17m.



### Hydraulic Emergency Down Kit

A lever operated three-way ball valve and mounting bracket provides a fail safe emergency down function.

This can be located on the host vehicle at a convenient location of your choosing.

The Hydraulic Emergency Down Kit is not suitable for the Electric Ladder, Swing, RotorStep or smaller RTV-LSSE Access Systems.

Note for the Electric Ladders an Emergency Stop can be fitted to stop the ladder at any point in the raise/lower cycle.



### Boarding Light

The boarding light is activated by pressing the up or down directional switch. The light will stay on for an adjustable/preset period.

### Audible Alarm

The external audible alarm is activated by pressing the up or down directional switch.



### Inhibit Kit

The Inhibit Kit can be connected to the host vehicle to inhibit many functions for example slewing, while the access system is in motion.



### Reservoir Heater

The Reservoir Heater ensures the viscosity of the oil is maintained to raise and lower the ladder in cold climates. The Reservoir Heater is suitable for temperatures down to



### Paint colours

All Safe-Away handrails and step treads can be painted to meet OEM or site paint colour specifications.

### Momentary Operation

The Electric access systems and Electric/Hydraulic Power Packs can be programmed for Momentary operation.



## Trilift® product range

Hedweld manufactures and distributes the Trilift® range of products specifically designed to assist with the removal, installation and handling of components on mining and heavy earthmoving vehicles. Components such as wheel motors, tyres, hoist cylinders, final drives, transmissions, differentials, hub and strut assemblies and more can be safely handled using our Trilift® component handling products.

As well as supporting the Australian mining industry, Hedweld products are exported worldwide to countries including Canada, Africa, South America, Central Asia, Asia Pacific and the USA.

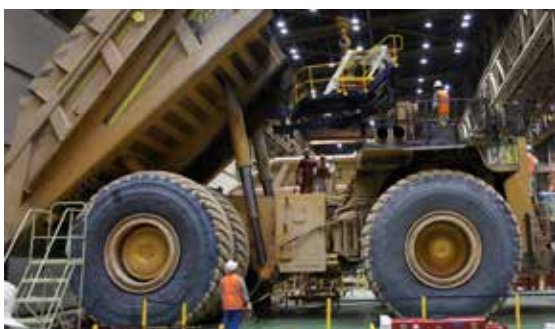
To keep pace with the ever changing developments in heavy machinery design, Hedweld works closely with Original Equipment Manufacturers (OEMs) to custom design new and innovative products to make component lifting and handling safer, more time efficient and offering significant productivity gains. With the release of new, larger mining and earthmoving equipment, comes the need to safely lift and handle heavier components. Hedweld is constantly reviewing product designs in order to provide the market with timely solutions to the latest lifting and handling requirements.



Trilift® Variable Work Table with Multijig and Cylinder Handler



Trilift® TH15000 Workshop Tyre Handler removing Cat 789C tyre



Trilift® Cat 797 Transmission Hoist removing transmission

For more information on Hedweld products visit

**[www.hedweld.com.au](http://www.hedweld.com.au)**

**Search by OEM vehicle type** to discover the right Trilift® and Safe-Away® products to suit your business.

Also manufacturers and suppliers of:



Maintenance Support Equipment

## Contact Information

Hedweld Engineering Pty Ltd  
5 Thrift Close, Mt Thorley NSW 2330  
Australia

Phone +61 2 6574 0000

Fax +61 2 6574 0099

[enquiries@hedweld.com.au](mailto:enquiries@hedweld.com.au)

[www.hedweld.com.au](http://www.hedweld.com.au)

**SAFETY  
EFFICIENCY  
INNOVATION**



*Designed to provide improved safety & efficiency  
when accessing earthmoving and mining equipment*