

Twin Jack Stand Model 100

The Trilift® Twin Jack Stand Model 100 (Part No. TL13101) is a versatile, heavy duty jack and stand designed to lift and support heavy earth moving equipment, such as dozers and trucks, to a combined working load limit of 100 tonne.

Once the load is raised, spring loaded jaws lock into the teeth on either side of the jack, transforming the Twin Jack Stands into **certified support stands**. The inclusion of a locking mechanism ensures compliance with Australian/New Zealand Standard AS/NZS2538-1995, Vehicle Support Stands. This feature eliminates the difficult, time consuming and dangerous procedure of making the change from a jack to a support stand and improves productivity by halving the time it takes to perform the task.

**ALL-IN-ONE
Jack & Stand
Improving
productivity
by 50%**



Spreads Heavy Loads

Unlike traditional jacks or stands the unique design of the Trilift® Twin Jack Stand Model 100 includes a broad 15.7in x 19.6in / 400mm x 500mm base-plate to spread heavy loads.

Versatile - by simply removing the centre carriage each turret can be used as a Single Jack Stand Model 50.

This Loading Chart shows the Single Jack Stand's lifting capabilities in relation to the thickness of concrete or other types of hard stand surface.

SURFACE THICKNESS	MPA	LOADING
6 inch/150mm	40	52 T



Each Jack is supplied with adaptors to achieve various lifting heights to a maximum of 50.8 inch / 1292mm. Custom adaptors are available upon request.



Flat Swivel Cap Adaptors



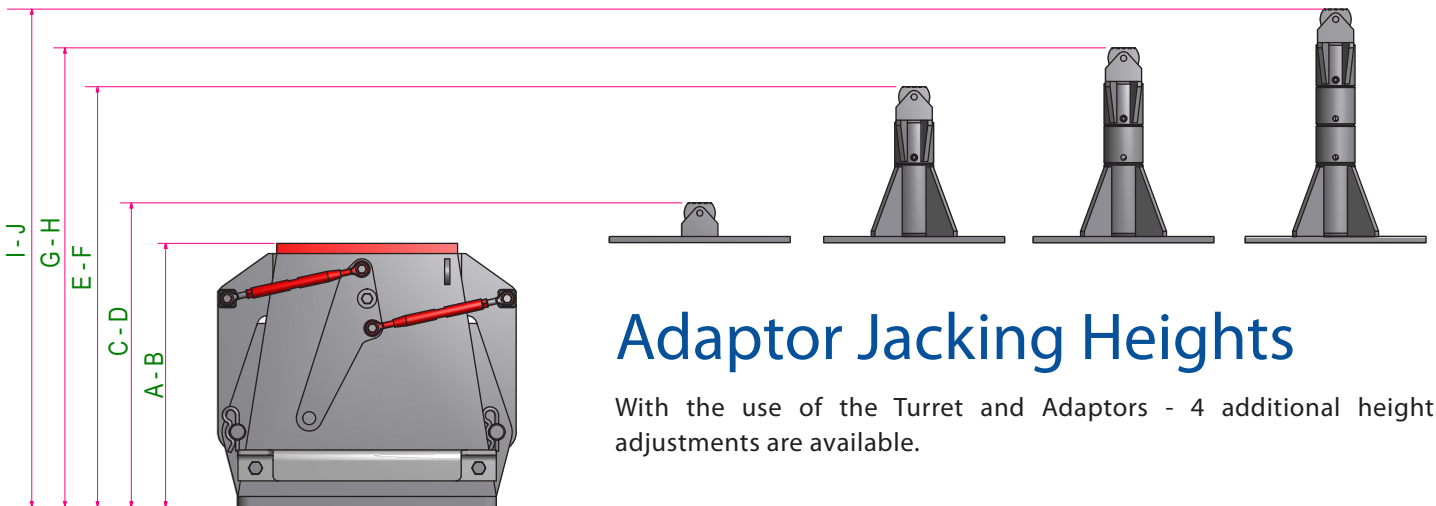
Adjustable Height Saddle Adaptor

Features and Benefits

- Jack and certified Work Stand combined in a single unit
- Broad based to spread heavy loads
- Adjustable jack widths using centre carriage
- Self-engaging locking jaws for increased safety
- Easy placement under a vehicle using a pallet jack
- Simple release of jaws prior to load lowering
- Remote Power Pack with 20"/6m hoses

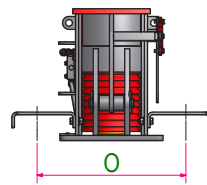
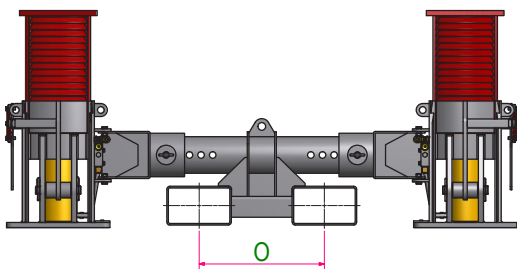
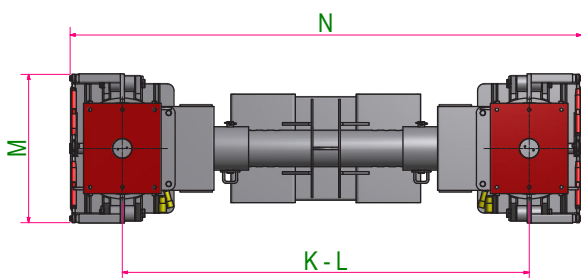
Key Operating Data

	SINGLE	TWIN
Working Load Limit	50t	100t
Tare Weight	683lbs/310kgs	1433lbs/650kgs



Adaptor Jacking Heights

With the use of the Turret and Adaptors - 4 additional height adjustments are available.



Key Dimensions

A-B Jack Height (Retracted - Extended)	20 - 33in	510 - 840mm
C-D Adaptor 1	23 - 36in	587 - 917mm
E-F Adaptor 2	32 - 45in	812 - 1142mm
G-H Adaptor 3	35 - 48in	887 - 1217mm
I-J Adaptor 4	38 - 51in	962 - 1292mm
K-L Width Adjustment (Retracted - Extended)	48 - 62in	1215 - 1575mm
M 50T Jack Width	23in	575mm
N 100T Twin Jack Length (Extended)	78in	1980mm
O Pallet Jack Tyne-Width	22.6in	575mm

Power Options

To complement the Trilift® Twin Jack Stand Models 100 and 300 we have developed Power Packs allowing the operator to jack both turrets simultaneously or individually, with adjustable tuning.

The Power Pack's 20 foot / 6 metre long hoses allow the operator to control the Twin Jack Stand from a safe distance and are connected using "quick connect" style connectors. These power packs are available in both Electric and Pneumatic power options.



Electric Power Packs

Pneumatic Power Packs

Electric Power Pack (Part No. CP03011A)

Key Operating Data

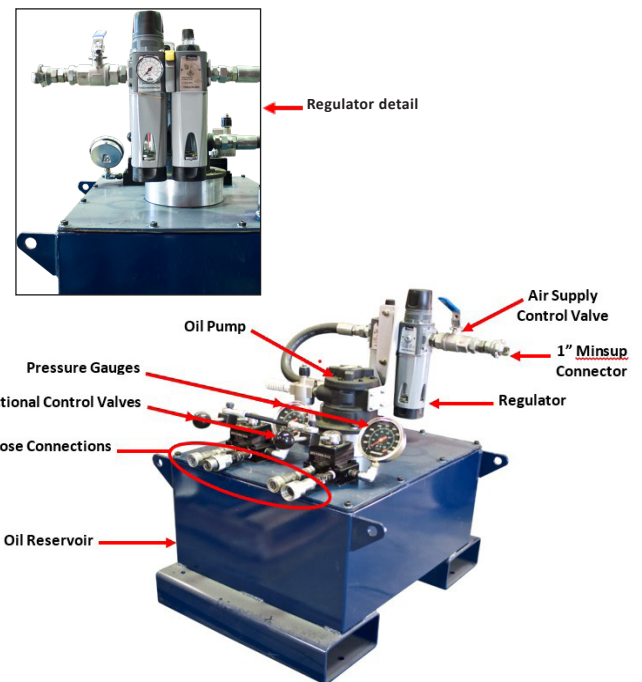
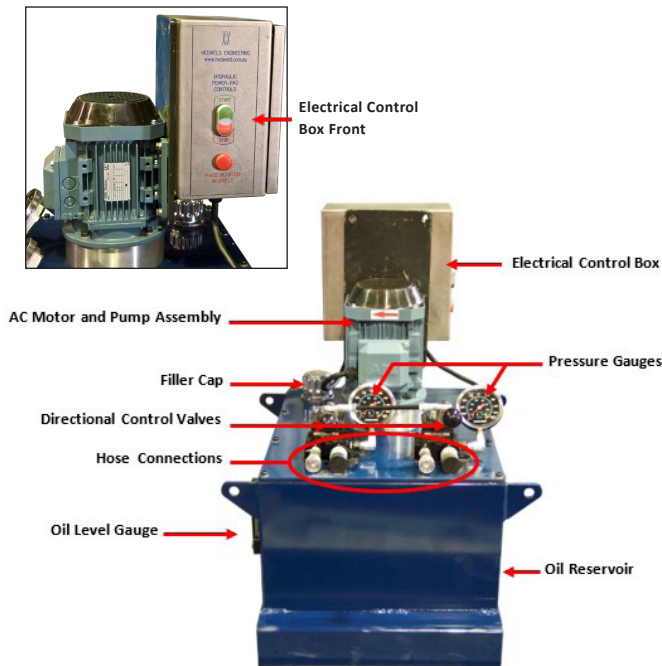
Standard supply voltage	415VAC, 50HZ, 3 phase
Custom voltage	on request
Oil reservoir capacity	21.1 gal / 80 litres
Pressure (Max)	10,000 psi (raise) 5,000 psi (lower)
Dimensions	32.5inH/25.3inL/28.5inW 827mmH/643mmL/725mmW
Pallet Jack tyne width	20.6 in / 525mm

Pneumatic Power Pack (Part No. CP03015A)

Supplied with air filter, lubricator and regulator.

Key Operating Data

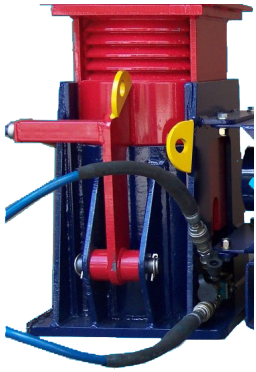
Oil reservoir capacity	21.1 gal / 80 litres
Control valve connectors	10,000psi
Air pressure required	110psi & 130CFM (Min 80psi)
Operating Pressure (Max)	10,000 psi (raise) 5,000 psi (lower)
Dimensions	31.1inH/25.3inL/28.5inW 792mmH/643mmL/725mm W
Pallet Jack tyne width	20.6 in / 525mm



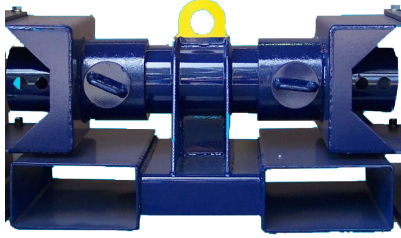
Like the Jack Stands the Power Packs can be moved with a:

- Pallet Truck - Manual (Part No. TL13250),
- Pallet Truck - Electric (Part No. TL13257) or
- a standard fork truck.

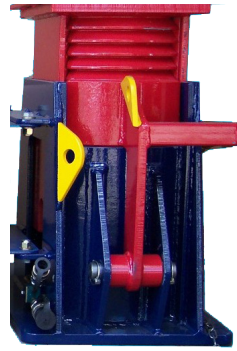
Twin Jack Stand Model 100T inclusions (Part No. TL13101)



1 X Single 50T Jack
Left
(Part No. TL13005)



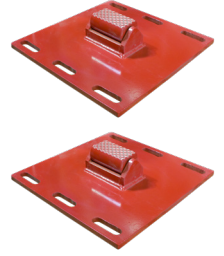
1 X Centre Carriage Adjustable
Width



1 X Single 50T Jack
Right
(Part No. TL13006)



2 X Adjustable
Height Swivel
Cap Adaptors
(Part No. TL13255)

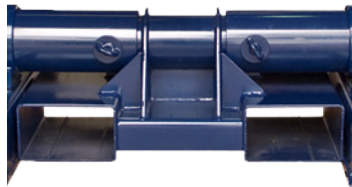


2 X Flat
Swivel Cap
Adaptors
(Part No. TL13261)

Twin Jack Stand Model 300T inclusions (Part No. TL13130)



1 X Single 150T Jack
Left
(Part No. TL13001)



1 X Centre Carriage Adjustable
Width



1 X Single 150T Jack
Right
(Part No. TL13003)



2 X Turrets
(P/N. HW75434)



2 X Turret Cap
Adaptors
(P/N. HW75437)



2 X Short Adaptors
(P/N. HW75446)



2 X Long Adaptors
(P/N. HW75447)

Full Adaptor Kits available

Power Options (required)



1 X Electric Power Pack
(Part No. CP03011)

OR



1 X Pneumatic Power
Pack (Part No. CP03015)

Pallet Trolley (optional)



1 X Manually
Operated WLL 2.5T
(Part No. TL13250)

OR

1 X Electrically
Operated WLL 1.5T
(Part No. TL13257)