

# Twin Jack Stand Model 100

The Trilift® Twin Jack Stand Model 100 (Part No. TL13101) is a versatile, heavy duty jack and stand designed to lift and support heavy earth moving equipment such as dozers and trucks to a combined working load limit of 100 tonne.

Once the load is raised, spring loaded jaws lock into the teeth on either side of the jack transforming the Twin Jack Stands into **certified support stands**. The inclusion of a locking mechanism ensures compliance with Australian/New Zealand Standard AS/NZS2538-1995, Vehicle Support Stands. This feature eliminates the difficult, time consuming and dangerous procedure of making the change from a jack to a support stand and improves productivity by halving the time it takes to perform the task.

Versatile - by simply removing the centre carriage each turret can be used as a Single Jack Stand Model 50.

**ALL-IN-ONE  
Jack & Stand  
Improving  
productivity  
by 50%**



## Spreads Heavy Loads

Unlike traditional jacks or stands the unique design of the Trilift Twin Jack Stand Model 100 includes a broad 400mm x 500mm base-plate to spread heavy loads.

This Loading Chart shows the Single Jack Stand's lifting capabilities in relation to the thickness of concrete or other types of hard stand surface.

SURFACE THICKNESS	MPA	LOADING
150mm	40	52 T

## Power options

To complement the Trilift® Twin Jack Stand Model 100 we have developed Power Packs allowing the operator to jack both turrets simultaneously or individually.

The Power Pack's 6 metre long hoses allow the operator to control the Twin Jack Stand from a safe distance, reducing the risk of 'line-of-fire' incidents.

Like the Jack Stands the Power Packs can be moved with a Pallet Truck - Manual (Part No. TL13250), Pallet Truck - Electric (Part No. TL13257) or a standard fork truck.



Electric Power Packs (Part No. CP03011) & Pneumatic Power Packs (Part No. CP03015)

Each Jack is supplied with adaptors to achieve various lifting heights to a maximum of 1292mm. Custom adaptors are available upon request.



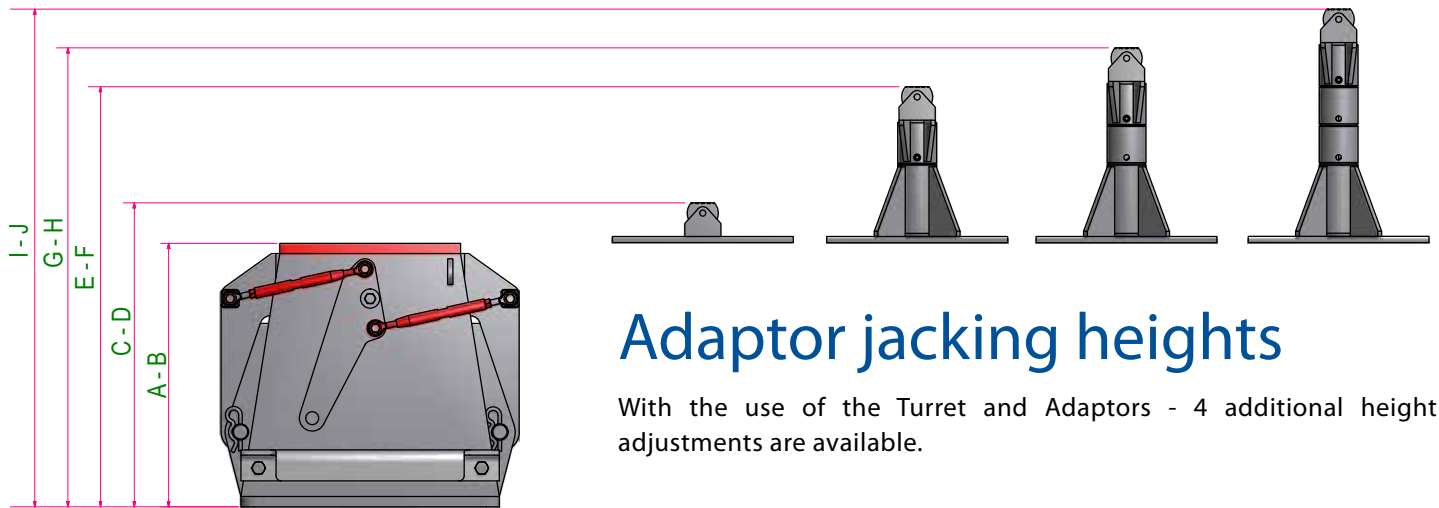
Flat Swivel Cap Adaptor Adaptors    Adjustable Height Saddle Adaptor

## Features and Benefits

- Jack and certified Work Stand combined in a single unit
- Broad based to spread heavy loads
- Adjustable jack widths using centre carriage
- Self-engaging locking jaws for increased safety
- Easy placement under a vehicle using a pallet jack
- Simple release of jaws prior to load lowering
- Remote Power Pack with 6m hoses

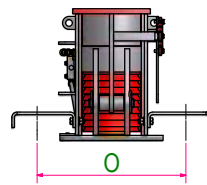
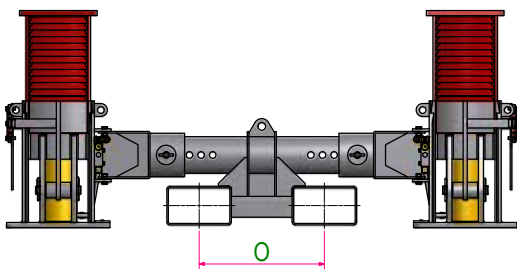
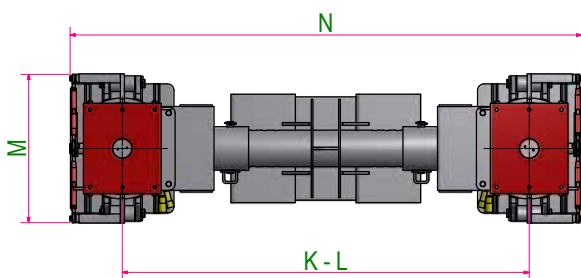
## Key Operating Data

	SINGLE	TWIN
Working Load Limit	50t	100t
Tare Weight	310kg/683lbs	650kg/1433lbs



## Adaptor jacking heights

With the use of the Turret and Adaptors - 4 additional height adjustments are available.



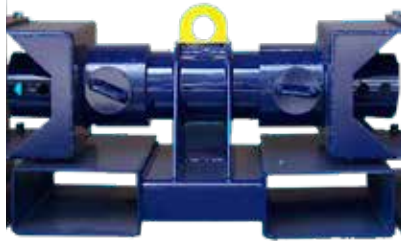
## Key Dimensions

A-B Jack Height (Retracted - Extended)	510 - 840mm	20 - 33in
C-D Adaptor 1	587 - 917mm	23 - 36in
E-F Adaptor 2	812 - 1142mm	32 - 45in
G-H Adaptor 3	887 - 1217mm	35 - 48in
I-J Adaptor 4	962 - 1292mm	38 - 51in
K-L Width Adjustment (Retracted - Extended)	1215 - 1575mm	48 - 62in
M 50T Jack Width	575mm	23in
N 100T Twin Jack Length (Extended)	1980mm	78in
O Pallet Jack Tyne-Width	575mm	22.6in

## Twin Jack Stand Model 100T inclusions (Part No. TL13101)



1 X Single 50T Jack  
Left  
(Part No. TL13005)



1 X Centre Carriage Adjustable  
Width



1 X Single 50T Jack  
Right  
(Part No. TL13006)



2 X Adjustable  
Height Swivel  
Cap Adaptors  
(Part No. TL13255)



2 X Flat  
Swivel Cap  
Adaptors  
(Part No. TL13261)

## Twin Jack Stand Model 300T inclusions (Part No. TL13130)



1 X Single 150T Jack  
Left  
(Part No. TL13001)



1 X Centre Carriage Adjustable  
Width



1 X Single 150T Jack  
Right  
(Part No. TL13003)



2 X Turrets  
(P/N. HW75434)



2 X Turret Cap  
Adaptors  
(P/N. HW75437)



2 X Short Adaptors  
(P/N. HW75446)



2 X Long Adaptors  
(P/N. HW75447)

Full Adaptor Kits available

### Power Options (required)



1X Electric Power Pack  
(Part No. CP03011)

**OR**



1 X Pneumatic Power  
Pack (Part No. CP03015)

### Pallet Trolley (optional)



1 X Manually  
Operated WLL 2.5T  
(Part No. TL13250)

**OR**

1 X Electrically  
Operated WLL 1.5T  
(Part No. TL13257)