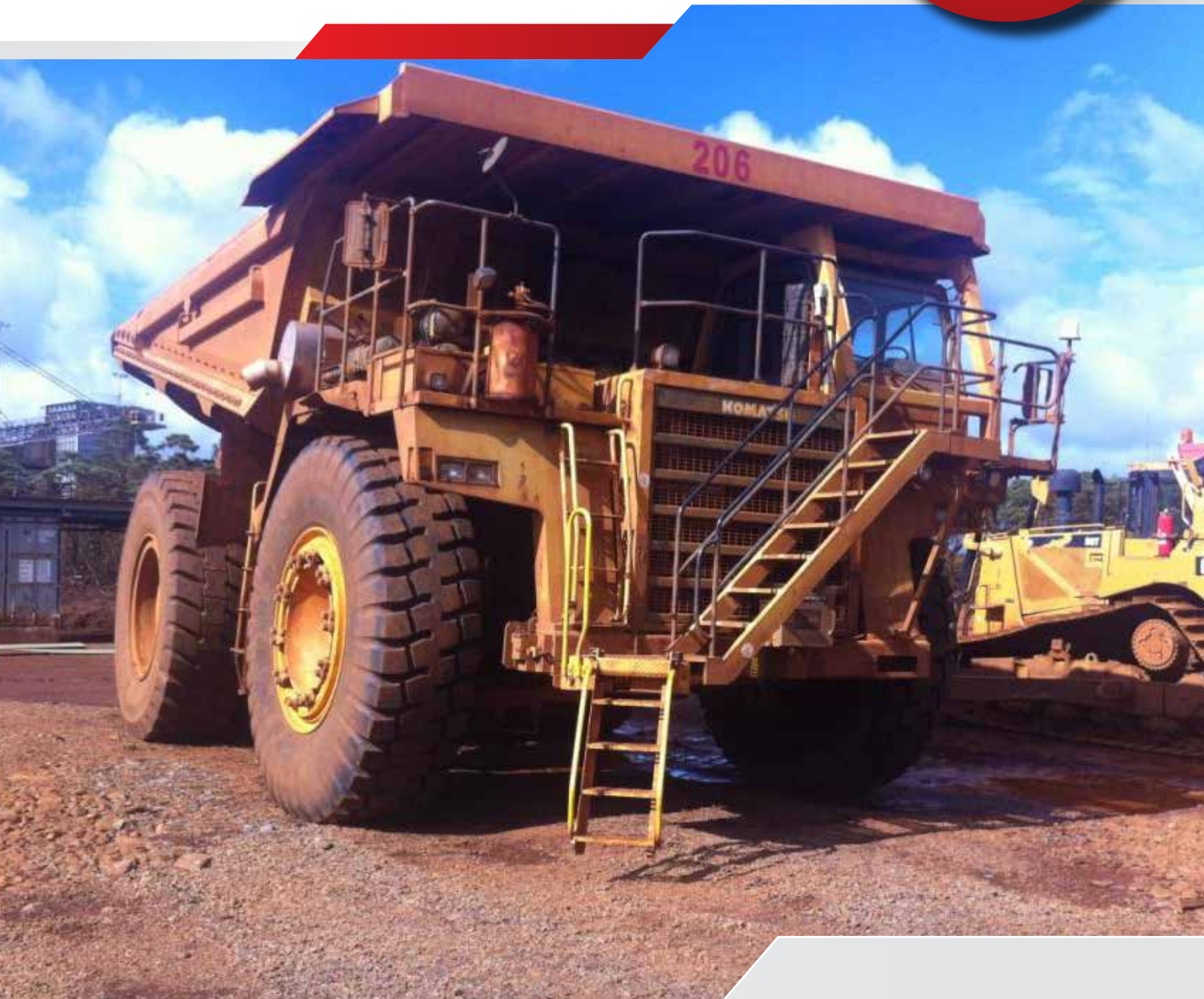


EL-RTV Electric Ladder

The Safe-Away® Electric Raise to Vertical Ladder has been designed to suit various makes and models of mining and earthmoving equipment.

Without the need for a hydraulic power pack the EL-RTVs raise to a safe position when the vehicle is in motion. They are easy to install and utilise a simple on-board control system without compromising the safety features you expect from Safe-Away®.

Easy to
operate &
competitively
priced



Safety & Efficiency

The **Safe-Away® EL-RTV** has been specifically designed to suit a wide range of equipment and provide:

- A 62° ladder offering safer access and egress while carrying tools.
- Models that raise safely out of the way while the vehicle is in motion.
- Fixed handrails to give three points of contact.
- Easy installation.
- Low maintenance.
- No hydraulics.
- Compact designs.
- Safe and user friendly.
- Cost effective.



Features



- **Boarding Light and Wiring Harness Kit.** The LED boarding light will stay on for an adjustable/ preset period.

- Incab **touch screen** controlling the up and down functions with a battery charge display.
- The **DVC710** is the master control for the electric access system input/ out and is located with the **Electrical Control Module (ECM)**.
- The DVC710 is encapsulated in the ECM **stainless steel box** to withstand harsh operating environments.
- **Momentary Operation** is available with the Park Brake Alarm. The alarm will activate when the park brake is released if the ladder is not fully raised and in its rest position.
- **Batteries** power the access system. The host equipment's main power recharges these batteries when host is in use.



ECM Functions

- The **state of charge** is regulated by the DVC710.
- The **operational voltage** is 24VDC with a maximum current draw of 12A.
- The DVC710 has its own Controller Area Network (CAN) which is used by the Incab Controller.
- The system is **compatible with all CAN-BUS** and J1939 components.
- Reverse polarity protection.
- Status LED indicator.



Optional extras

1. Additional Raise and Lower Control Panel Kit



A remotely mounted control panel designed to enable the raise and lower operation from outside of the vehicle's cab, or at a position accessible from ground level.

Encased in protective aluminium box.

2. An **Emergency Stop** can be fitted to stop the access system at any point in the raise/lower cycle. Motion can be resumed by pressing a directional button.

3. An external **Audible Alarm Kit** is activated by pressing the up or down directional switch.



4. An optional **Inhibit Kit** can be used to control vehicle functions such as (but not limited to) slew and propel on excavators, propel on electric drive trucks and blade inhibit on graders.



5. Safe-Away® Access Systems can be supplied with **momentary operation**.

Designed to suit your fleet

The **Safe-Away® EL-RTV** is designed to suit OEM vehicles and are able to be retrofitted if replacing existing systems. The EL-RTV may be varied to accommodate your requirements for specific mount points, platform handrails, infills and site and/or OEM colors.

Specifications

The Safe-Away® EL-RTV Ladder has been designed and manufactured to comply where practicably possible with the relevant sections of the following standards:-

SAE J185_200305 ISO 2867:2011 ANSI Z535.4-2007
 ANSI A14.2-2007 AS 3868-1991 AS 5327:2019
 AS1657-2013

| EL-RTV | | | |
|---|-------|-------|-------|
| The Electric Ladder - Raise to Vertical is designed for use on: | | | |
| HD605 | HD455 | HD785 | HD985 |
| Can be adapted for other equipment. | | | |

| EL-RTV Range Dimensions | | | | | | | | |
|---------------------------|---------------------|--------|----------------------|--------|-------------------|--------|--------------------|--------|
| Steps | A - Max Deck Height | | B - Raised Extremity | | F - Overall Width | | G - Overall Length | |
| 5 | 1394mm | 54.8in | 1266mm | 49.8in | 925mm | 36.4in | 1230mm | 48.4in |
| 6 | 1650mm | 64.9in | 1548mm | 60.9in | 606mm | 23.8in | 1327mm | 52.2in |
| 7 | 1900mm | 74.8in | 1830mm | 72in | 685mm | 26.9in | 1433mm | 56.4in |
| C - Max Step Height | | | 400mm | 15.7in | | | | |
| D - Tread Width | | | 469mm | 18.4in | | | | |
| E - Fixed Handrail Height | | | 946mm | 37.2in | | | | |
| H - Tread Height | | | 250mm | 9.8in | | | | |

