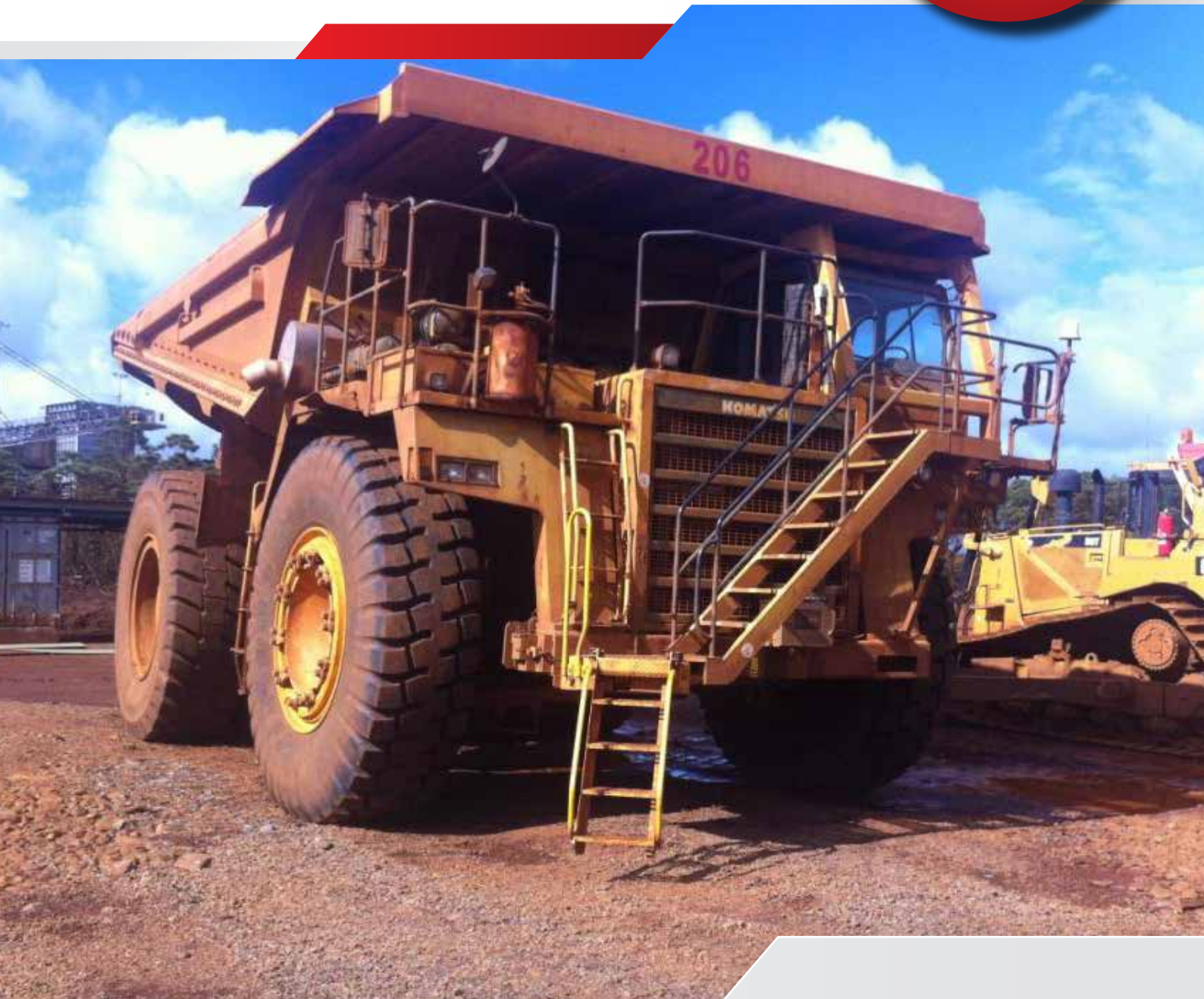


EL-RTV Electric Ladder

The Safe-Away[®] Electric Raise to Vertical Ladder has been designed to suit various makes and models of mining and earthmoving equipment.

Without the need for a hydraulic power pack the EL-RTVs raise to a safe position when the vehicle is in motion. They are easy to install and utilise a simple on-board control system without compromising the safety features you expect from Safe-Away[®].

Easy to
operate &
competitively
priced



Safety & Efficiency

The **Safe-Away® EL-RTV** has been specifically designed to suit a wide range of equipment and provide:

- A 62° ladder offering safer access and egress while carrying tools.
- Models that raise safely out of the way while the vehicle is in motion.
- Fixed handrails to give three points of contact.
- Easy installation.
- Low maintenance.
- No hydraulics.
- Compact designs.
- Safe and user friendly.
- Cost effective.



Features



- **Boarding Light and Wiring Harness Kit.** The LED boarding light will stay on for an adjustable/ preset period.

- Incab **touch screen** controlling the up and down functions with a battery charge display.
- The **DVC710** is the master control for the electric access system input/ out and is located with the **Electrical Control Module (ECM)**.
- The DVC710 is encapsulated in the ECM **stainless steel box** to withstand harsh operating environments.
- **Momentary Operation** is available with the Park Brake Alarm. The alarm will activate when the park brake is released if the ladder is not fully raised and in its rest position.
- **Batteries** power the access system. The host equipment's main power recharges these batteries when host is in use.



ECM Functions

- The **state of charge** is regulated by the DVC710.
- The **operational voltage** is 24VDC with a maximum current draw of 12A.
- The DVC710 has its own Controller Area Network (CAN) which is used by the Incab Controller.
- The system is **compatible with all CAN-BUS** and J1939 components.
- Reverse polarity protection.
- Status LED indicator.



Optional extras

1. Additional Raise and Lower Control Panel Kit



A remotely mounted control panel designed to enable the raise and lower operation from outside of the vehicle's cab, or at a position accessible from ground level.

Encased in protective aluminium box.

2. An **Emergency Stop** can be fitted to stop the access system at any point in the raise/lower cycle. Motion can be resumed by pressing a directional button.

3. An external **Audible Alarm Kit** is activated by pressing the up or down directional switch.



4. An optional **Inhibit Kit** can be used to control vehicle functions such as (but not limited to) slew and propel on excavators, propel on electric drive trucks and blade inhibit on graders.



5. Safe-Away® Access Systems can be supplied with **momentary operation**.

Designed to suit your fleet

The **Safe-Away® EL-RTV** is designed to suit OEM vehicles and are able to be retrofitted if replacing existing systems. The EL-RTV may be varied to accommodate your requirements for specific mount points, platform handrails, infills and site and/or OEM colours.

Specifications

The Safe-Away® EL-RTV Ladder has been designed and manufactured to comply where practicably possible with the relevant sections of the following standards:-

SAE J185_200305 ISO 2867:2011 ANSI Z535.4-2007
 ANSI A14.2-2007 AS 3868-1991 AS 5327:2019
 AS1657-2013

EL-RTV			
The Electric Ladder - Raise to Vertical is designed for use on:			
HD605	HD455	HD785	HD985
Can be adapted for other equipment.			

EL-RTV Range Dimensions								
Steps	A - Max Deck Height		B - Raised Extremity		F - Overall Width		G - Overall Length	
5	1394mm	54.8in	1266mm	49.8in	925mm	36.4in	1230mm	48.4in
6	1650mm	64.9in	1548mm	60.9in	606mm	23.8in	1327mm	52.2in
7	1900mm	74.8in	1830mm	72in	685mm	26.9in	1433mm	56.4in
C - Max Step Height			400mm	15.7in				
D - Tread Width			469mm	18.4in				
E - Fixed Handrail Height			946mm	37.2in				
H - Tread Height			250mm	9.8in				

