

Chain N Lift

The Trilift® Chain N Lifts have been designed to enable field maintenance staff to carry out the safe and efficient handling of dragline, excavator and shovel bucket teeth.

The Chain N Lift is available in 2 sizes:

- 100kg/220lbs W.L.L. (Part No. TL20001) or
- 400kg/882lbs W.L.L. (Part No. TL20002)

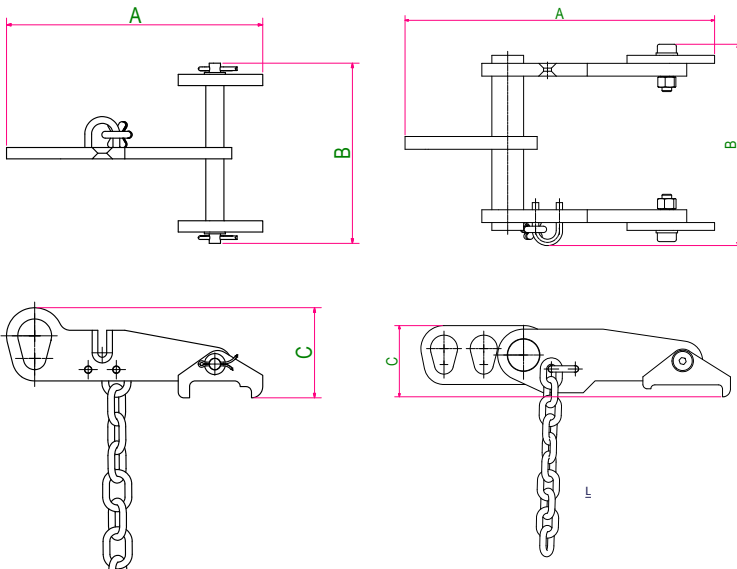
Simple to use

After removing the tooth retaining pin, position the claw foot over the back edge of the tooth. Locate the chain around the tooth and lock tightly into the slot on the opposite Chain N Lift arm. Connect a hook or 'D' shackle to the lifting point and carefully remove/install the tooth.

Specifications

The Trilift® Chain N Lift is compliant with the following standards:

- AS3990-1993 Mechanical equipment-steelwork.
- AS/NZS 1554.1:2011 Structural Steel Welding.
- AS/NZS 4991-2004: Lifting Devices
- AS/NZS 3678-2011 Structural steel - Hot-rolled plates, floorplates and slabs.
- AS/NZS 3679.1 Hot-rolled bars and sections.



100kg

400kg

Features and Benefits

- Eliminates manual handling.
- Two lifting eyes to vary the tooth positioning angle.
- Self-aligning, auto-adjusting foot to allow for tooth wear.
- Adjustable chain for variable tooth sizes.

Key Operating Data

100kg Tare weight	1.05kg	2.3lbs
400kg Tare weight	7.4kg	16.3lbs

Key Dimensions

100kg Chain N Lift

A	228mm	9in
B	160mm	6in
C	80mm	3in

400kg Chain N Lift

A	389mm	15in
B	253mm	10in
C	90mm	3.5in