

# Variable Work Table XC30

The Trilift® Variable Work Table XC30 has been designed to safely handle a range of components on the new Ultra-class range of mining haul trucks with a carrying capacity in excess of 400 tonnes.

The main frame carrier is self-propelled and hydraulically operated and has a safe working capacity of 30 tonnes (on the table). The table is pre-drilled to accept a range of component specific jigs. The VWT XC30 is available in two models:

1. The Trilift® VWT XC30D has an independent 4 stroke diesel engine with a portable remote control to increase freedom to move around the workshop (*Part No. TL01003*).
2. The Trilift® VWT XC30E which is AC/DC powered offering the choice of 415V AC and 48V DC power (*Part No. TL01031*).



Maintenance Support Equipment

## Features and Benefits

- Fully remote controlled
- Diesel powered
- All Wheel Drive/Rear Wheel Drive
- Front and Rear steer
- Table capable of Raise, Tilt and Slew
- Handles a range of components
- No suspended load
- Work within one bay
- Reduces down time
- Increases safety for all working on and around the machine



Terex MT6300 Wheel Motor removal using the Trilift® VWT XC30



The Trilift® VWT XC30 with wheel motor removed from Terex MT6300



## Contact Information

Hedweld Engineering Pty Ltd  
13 Russell Rd  
Mt Thorley NSW 2330

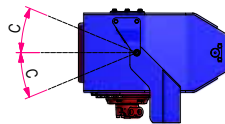
Ph: 02 6574 0000  
Fax: 02 6574 0099

enquiries@hedweld.com.au  
www.hedweld.com.au

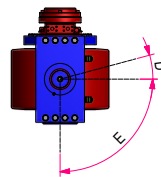
## Specifications

Available Trilift® Jigs suited for the Trilift® VWT XC30:

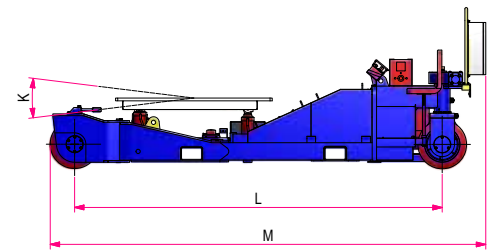
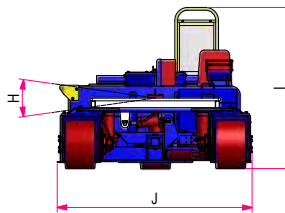
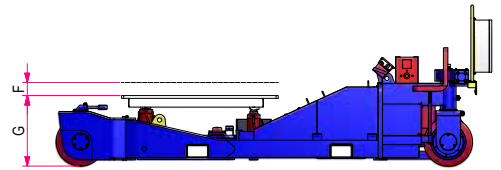
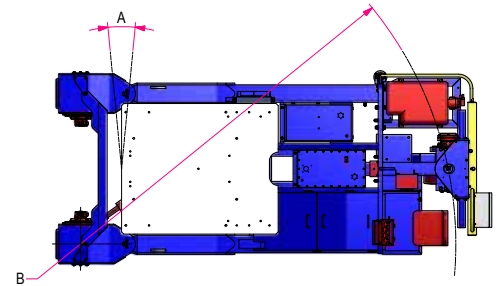
- Multijig XC Tilt Head (Part No. TL02090)
- Cylinder Handler (Part No. TL02091)
- Universal Hub and Strut Jig (Part No. TL02049)
- Universal Electric Wheel Motor Jig (Part No. TL02093)
- Large Wheel Motor Jig (Part No. TL02095)
- Universal Rear Wheel Group Jig (Part No. TL02023)
- The Spider Tool (Part No. TL02094)



FRONT STEERING DETAIL



REAR STEERING DETAIL



### Component handling includes:

- Wheel Motors
- Rear Struts
- Front Hubs
- Hub and Strut Assemblies
- Final Drives

### Key Dimensions (approximately)

A	Table Rotation	11°	-
B	Turning Radius	4312mm	170in
C	Front Steering Angle	22.5°	-
D	Rear Steering Angle Right	15°	-
E	Rear Steering Angle Left	90°	-
F	Vertical Travel	150mm	5.9in
G	Lowered Table Height	810mm	31.9in
H	Side Tilt	16°	-
I	Overall Height	1851mm	72.9
J	Overall Width	2240mm	88.2in
K	Forward Tilt	14°	-
L	Wheel Base	4225mm	166.3in
M	Overall Length	5005mm	197in

### Key Operating Data

Safe Working Load	30000 kg	66139lb
Travel Speed	0-8 m/min	0-26ft/min
Tare Weight	6120kg	13492lb
Hydraulic Relief Pressure	185 bar (18.5MPa)	2683psi
Pump Capacity	18 litres/min	4 gal/min
Hydraulic Reservoir Capacity	80 litres	21 gal
Engine	Hatz Diesel	-
Electrical Control	24 V DC	-
Battery	12V N70ZZ (x2)	-
Fuel Tank Capacity	80 litres	26 gal