

Transmission Removal Stands and Ramps

To enable removal of the transmission from the confined space under Cat 777, 785, 789 and 793 trucks using the Trilift® Transmission Hoist, the rear of the truck needs to be raised.

To allow clearance for the removal of the transmission, Trilift® offers two different options, the Transmission Removal Stands (Part No. TL12101) and Ramps (Part No. TL12103) are available.



Trilift® Wheel Stand



The Trilift® Wheel Stands are placed under the outside set of wheels. This allows clearance for the removal of the transmission under the differential. The stands are adjustable in height to suit the various models of Cat trucks.

The Trilift® Wheel Ramps section allows the truck to be driven into place in a safe and efficient manner and are designed to accommodate the various models of Cat trucks.

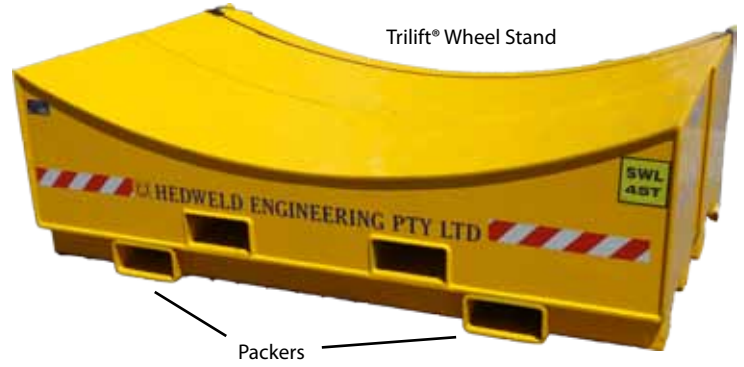
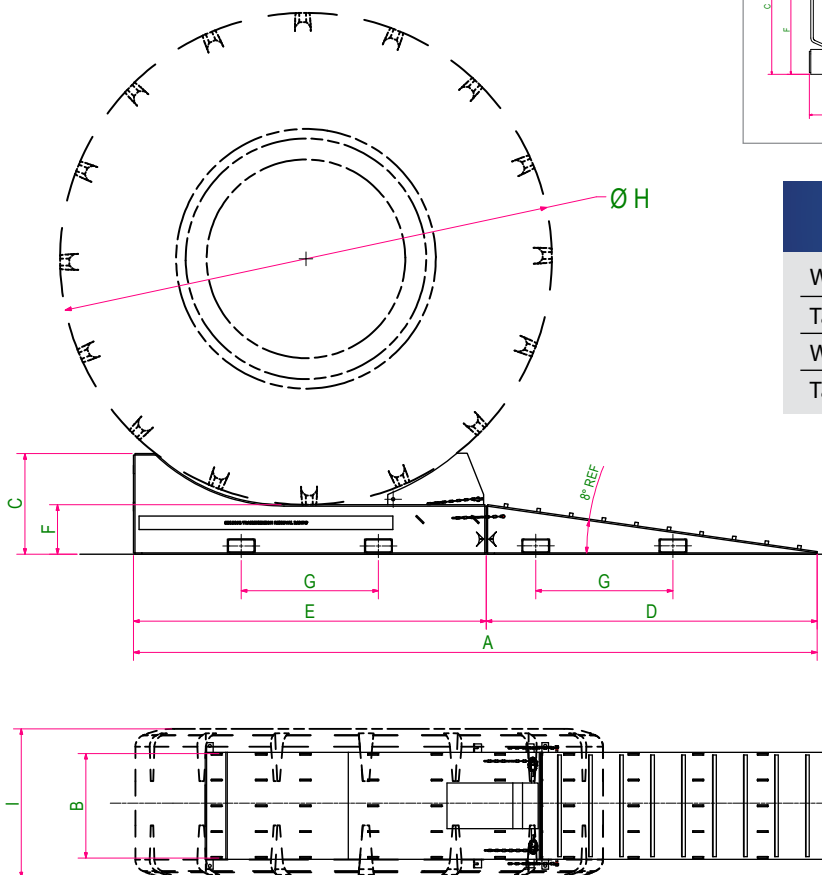
Specifications

The Trilift® Transmission Removal Stands and Ramps are compliant with the following standards:

- AS3990-1993 Mechanical equipment-steelwork.
- AS/NZS 1554.1-2004 Structural Steel Welding.
- AS 1163 Structural steel hollow sections.
- AS/NZS 3679 Structural Steel.
- AS/NZS 1252 High strength steel bolts with associated nuts and washers for structural engineering.

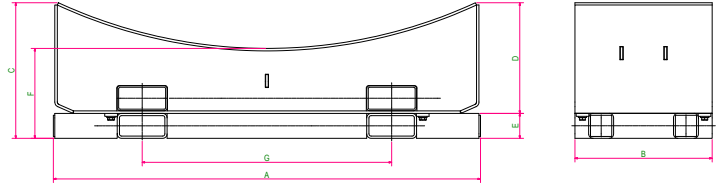
Two piece wheel ramp to suit Cat 777 -793 Trucks - Key Dimensions

A Overall length	4980mm	196in
B Overall width	800mm	31in
C Overall height	735mm	29in
D Ramp length	2415mm	96in
E Stand length	2570mm	101in
F Stand lift height	360mm	14in
G Fork tyne width	1000mm	39in
H Max recommended tyre diameter	3585mm	141in
I Max recommended tyre width	1140mm	45in



Wheel Stand and packers to suit Cat 793 Trucks - Key Dimensions

A Overall length	1715mm	68in
B Overall width	550mm	22in
C Overall height	545mm	22in
D Stand height	445mm	18in
E Packer height	100mm	4in
F Stand lift height	360mm	14in
G Fork tyne width	1000mm	39in
H Max recommended tyre diameter	4000mm	157in



Key Operating Data

Working Load Limit Ramps	40t	
Tare Weight Ramps	2 X 1480kg	2 X 3263lbs
Working Load Limit Stands	45t	
Tare Weight Stands	860kg	1896lbs